

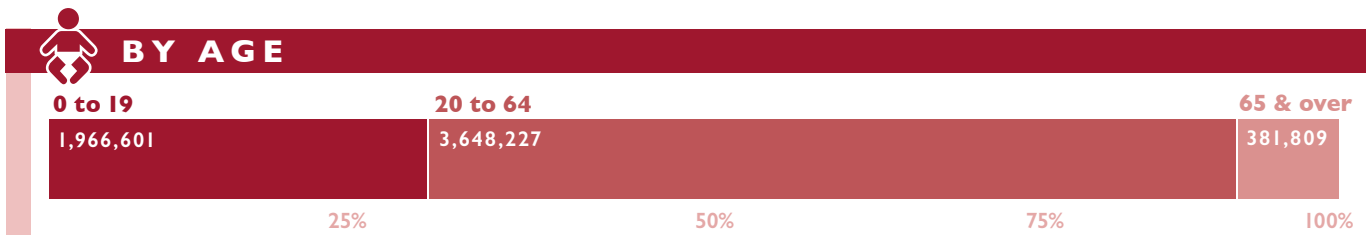
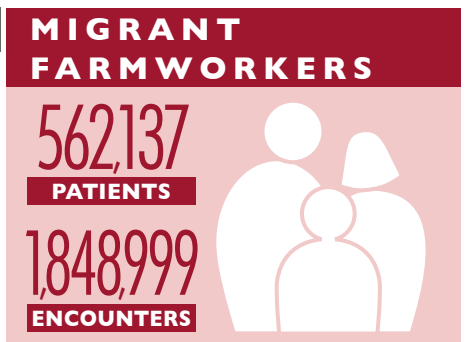
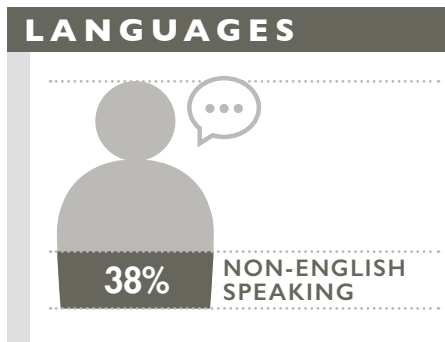
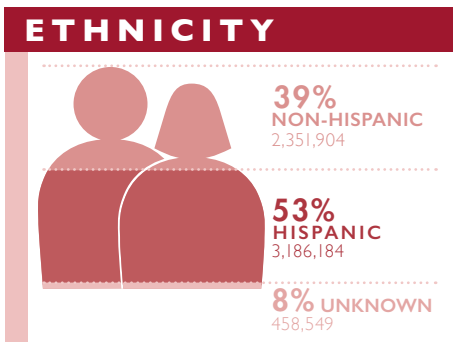
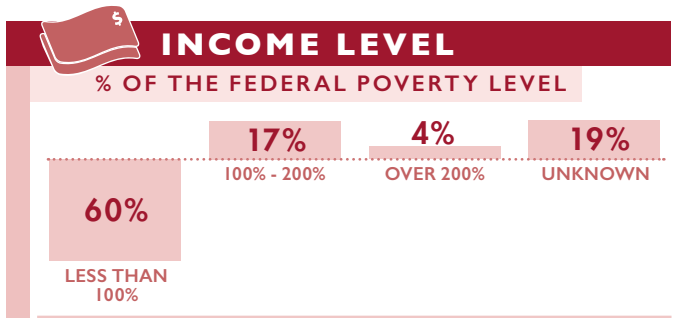
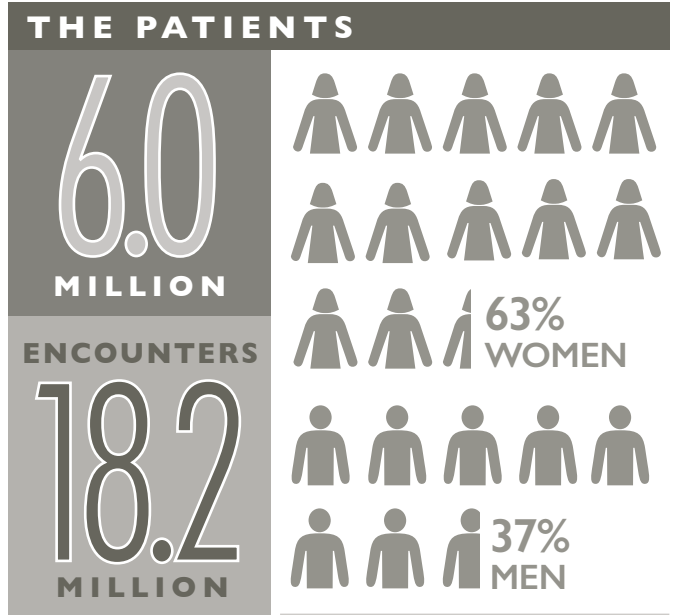
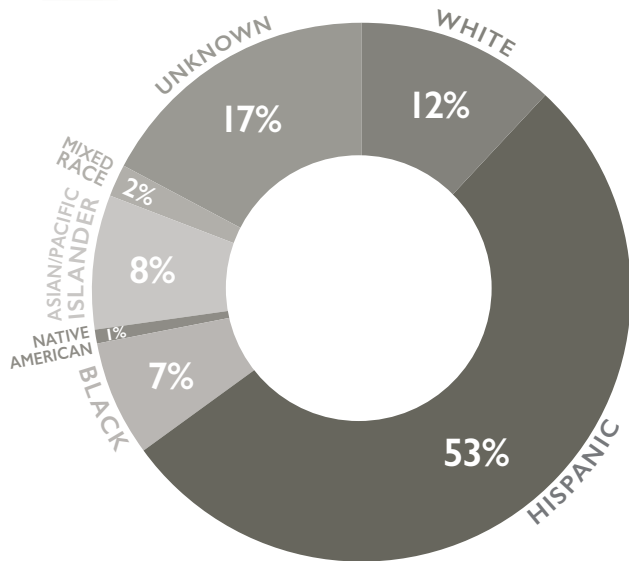
COMMUNITY CLINICS AND HEALTH CENTERS

2016 PROFILE

PATIENTS



BY RACE



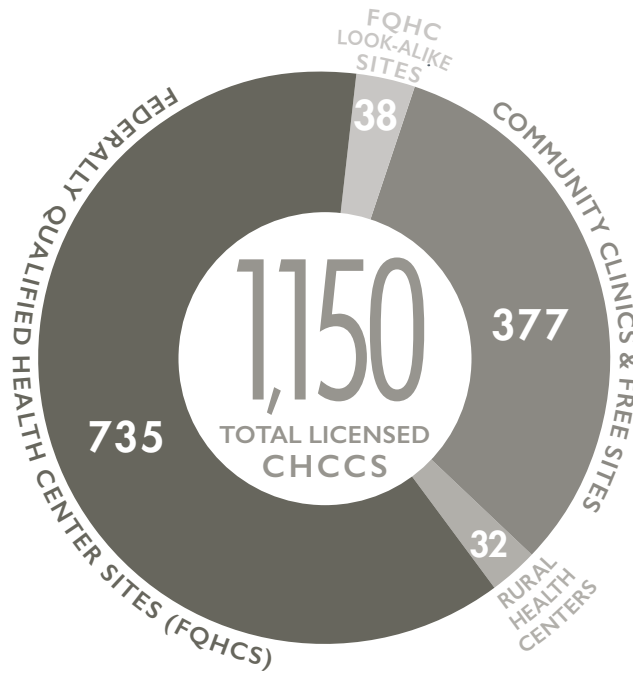
COMMUNITY CLINICS AND HEALTH CENTERS

2016 PROFILE

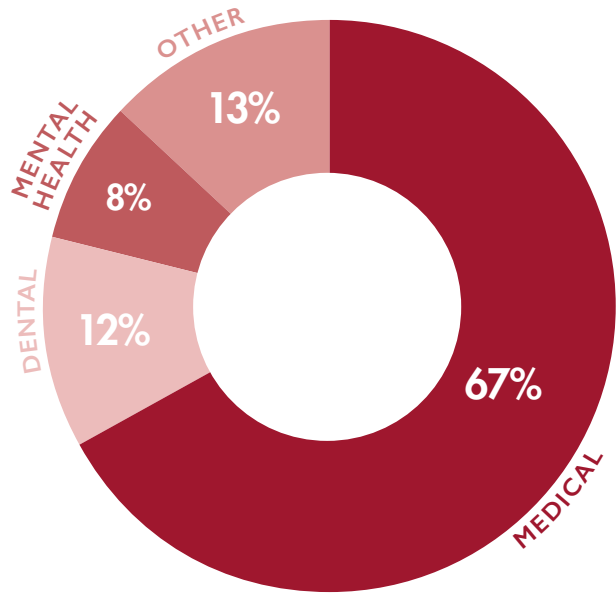
FACILITIES AND SERVICES



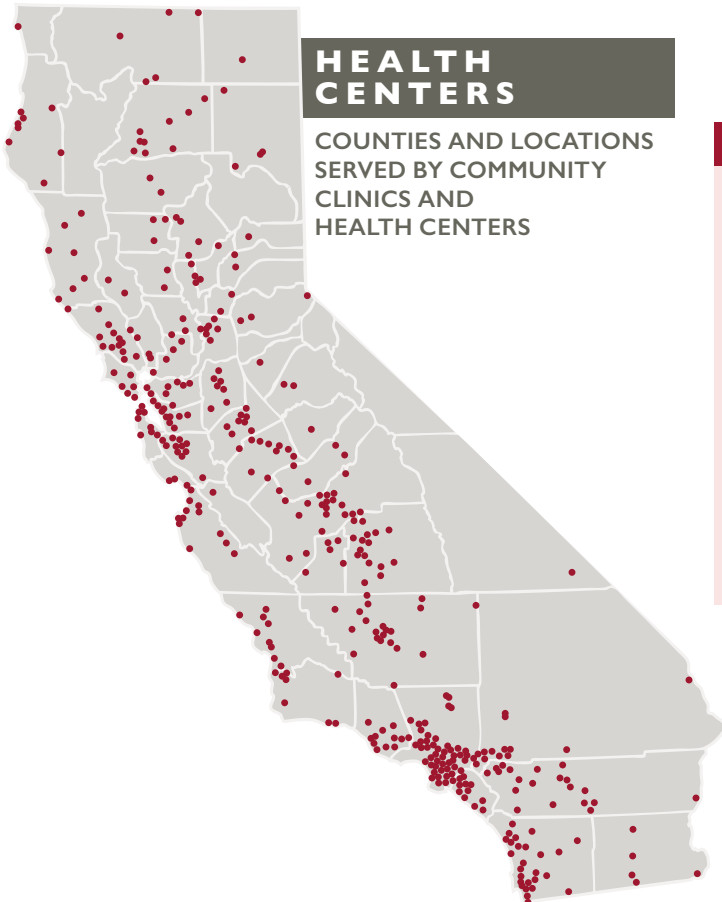
CLINIC TYPES



CLINICAL SERVICES



Other Available Services Include:
Womens Health • Pharmacy • Urgent Care, Radiology
Laboratory • Vision • Domestic Violence • Substance Abuse



COMMUNITY SERVICES

- OUTREACH
- EDUCATION
- NUTRITION
- SOCIAL SERVICES
- HOMELESS
- TRANSPORTATION
- ADULT DAY CARE
- DISASTER RELIEF